

HANDLE SHANKS

Aluminium, epoxy resin coating, RAL 9005 black colour, matte finish.
Zinc-plated tapped bosses in lateral supports.

END CAPS

Polyamide based (PA) technopolymer, black colour.

STANDARD EXECUTIONS

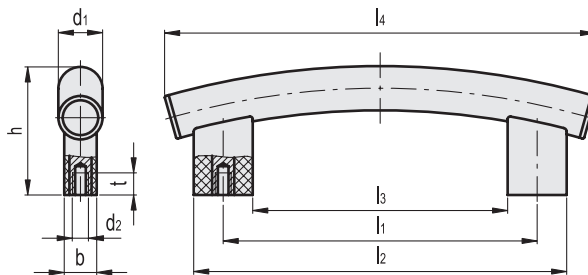
- **GN 666.4-SW:** aluminium, epoxy resin coating, RAL 9005 black colour, matte finish.
- **GN 666.4-EL:** anodised aluminium, natural colour.

DESIGN

The slightly bent shape of the tube provides GN 666.4 handles a modern and refined design.

SPECIAL EXECUTIONS ON REQUEST

GN 666.4-NG: AISI 304 stainless steel tube, semi-glossy finish.



Conversion Table
1 mm = 0.039 inch

d1	
mm	inch
30	1.18

Code	Description	d1	l1	d2	b	h	l2	l3	l4	tmin	⚖️
GN.27493	GN 666.4-30-M8-400-SW	30	400±1	M8	22	90	440	360	480	15	361
GN.27503	GN 666.4-30-M8-500-SW	30	500±1	M8	22	94	540	460	580	15	400
GN.27513	GN 666.4-30-M8-600-SW	30	600±1	M8	22	98	640	560	680	15	450
GN.27491	GN 666.4-30-M8-400-EL	30	400±1	M8	22	90	440	360	480	15	361
GN.27501	GN 666.4-30-M8-500-EL	30	500±1	M8	22	94	540	460	580	15	400
GN.27511	GN 666.4-30-M8-600-EL	30	600±1	M8	22	98	640	560	680	15	450